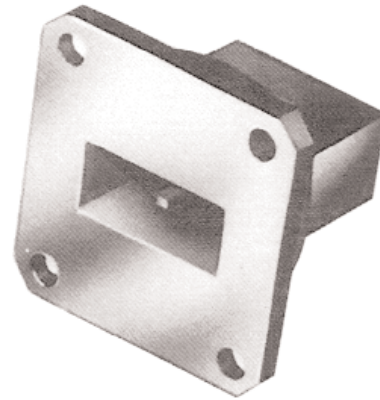


**Product Line Discontinued, but
may be available to special order**

- ◆ High Temperature Refractory Load Elements
- ◆ Extremely Rugged Medium Power Loads



Microlab WD series dummy loads are low cost, miniaturized units with moderate power handling capacity. Models are designed for bands from 7.50 to 11.50 GHz.

The WD loads employ tapered refractory load elements which are capable of withstanding extremely high temperature. These loads are sometimes used as 1 Watt terminations at ambient temperatures as high as 600°F. They are designed to provide optimum performance over approximately 12% frequency bands. Cover flanges are supplied.

The table provides power ratings for each model. Independent average power rating assumes CW operation, and independent peak power rating assumes negligible average power. The combined average and peak power ratings should be employed together.

Designs to handle special requirements for bandwidth, size, flanges, etc., are available on request. (03/10)

VSWR:	1.20:1 max.
Dissipative	
Material:	Refractory
Test Pressure:	45 psig. max.
Housing Finish:	Black Paint Per TT-E-489
Flange Type:	Cover
Material:	Aluminum
Flange Finish:	Iridite Per MIL-C-5541

Model No.	Frequency Range GHz	Waveguide Size		Power Ratings				Nominal Dimensions Inches (mm)			Weight oz (g)
		RG	WR	W avg.	kW pk. @40 psig	W avg.	kW pk. @30 psig	L	W	H	
WD series Mini-Load											
WD-0052	7.5 - 8.5	68	112	150	100	60	60	2.2	1.9	1.9	2.5
WD-0053	8.5 - 9.6							(56)	(48)	(48)	(70)
WD-0056	8.5 - 9.6	67	90	100	75	40	40	1.9	1.7	1.7	2.5
WD-0057	9.5 - 10.6							(48)	(43)	(43)	(70)
WD-0058	10.3 - 11.5										

† see text

*at 0 psig